

फक्त घर नव्हे !



A PROJECT BY INFINI GROUP

A signature

BRAND
BESTOWING
LIMITLESS LIVING

Infini, our distinguished series/ collection is born from a dream crafted with passion & artistry. It's a testament to uncompromising quality, timeless design, and unparalleled craftsmanship. Each project within this label is designed to reflect our dedication to quality, aesthetics, & innovation.

It's more than just owning property; it's about becoming part of a community that values excellence. Discover an extraordinary world of refined lifestyles & luxury with Infini.

REACHING NEW PEAKS OF ACHIEVEMENT



600+
HAPPY
FAMILIES



3.5 MILLION
SQ. FT.
DEVELOPED



4.5+ ACRES
UNDER
CONSTRUCTION



9.2+ ACRES
TOTAL
UPCOMING



CRAFTING A LEGACY OF TRUST & INNOVATION

ONGOING PROJECTS

- Matoshri Serenity, Moshi
- Onella Tower, Charholi. BK
- Matoshri Prime, Charholi. BK
- Stella Regency, Charholi. BK
- Matoshri Aradhyam, Charholi. Bk
- Raya Residency, Alephata
- Shivneri heights, Alephata

UPCOMING PROJECTS

- Shubh Elara, Charholi. BK
- Infrasky Residency, Charholi. BK
- Marriott Villa, Alephata
- Shiv Parvati Complex Manchar

COMPLETED PROJECTS

- Shubh Aarambh, Lohegaon
- Pratham yash Vrindavan, Chovisawadi
- Datta vatika. Dighi
- Shiv Angan, Charholi Bk
- Shiv Sai Parth Phase 1. Aalephata
- Shiv Sai Parth Phase 2. Aalephata
- Kadam Avenue, Aalephata
- Mauli Complex, Aalephata
- Bankhile Complex, Aalephata



WAY TO OUTSTANDING

destinations



INFINI
JAGTAP CITY



Map not to Scale

THE SPIRITUAL address

Infini Jagtap City boasts excellent connectivity to major destinations in and around Pune. Situated in Charholi, it offers convenient access to key areas like Hinjawadi IT Park, Pimpri Chinchwad MIDC, and Pune International Airport. With well-developed road networks and upcoming metro connectivity, commuting to work or leisure destinations is seamless. Additionally, proximity to educational institutions, hospitals, and shopping centers ensures a well-rounded lifestyle for residents. Experience the ease of connectivity and accessibility at Infini Jagtap City.

CONNECTIVITY

Nashik Highway	8 Mins
Vishrantwadi	18 Mins
Pune Intl. Airport	25 Mins
Pimpri-Chinchwad	26 Mins
Viman Nagar	29 Mins
Mumbai-Pune Expressway	34 Mins
Pune Railway Station	35 Mins
Shivaji Nagar	35 Mins

HOSPITALS

KK Care Multispeciality Hospital	1 Mins
Anand Multispeciality Hospital	7 Mins
Aai Mother and Child Hospital	8 Mins
Accord Hospital	9 Mins

MIDC AREA

Chakan MIDC	20 Mins
Tata Motors	20 Mins
Bhosari MIDC	24 Mins

SHOPPING

DMart Moshi	24 Mins
Reliance Smart	29 Mins
Phoenix Mall	30 Mins

EDUCATION

RKL Galaxy Intl. School	2 Mins
Radcliffe CBSE School	6 Mins
MIT College	8 Mins
Sadhu Vaswani Intl. School	11 Mins
DY Patil College	21 Mins

IT PARKS

Tata Communication Limited (Dighi)	16 Mins
Commerzone IT Park (Yerawada)	20 Mins
Kalyani Nagar	30 Mins
Hinjawadi IT Park	40 Mins
EON IT Park (Kharadi)	42 Mins

TEMPLES

Shree Gajanan Maharaj Sansthan	7 Mins
Shri Gajanan Maharaj Mandir	8 Mins
Shree Sant Dnyaneshwar Maharaj	9 Mins
Samadhi Mandir, Alandi	
Jalaram Mandir	11 Mins
Shri Swami Samartha Mandir	12 Mins



Scan QR Code to Visit
Infini Jagtap City
Location



फक्त घर नव्हे
तर

रुबाव

म्हणा!



FUTURE DEVELOPMENT

FUTURE DEVELOPMENT

FUTURE DEVELOPMENT



FUTURE DEVELOPMENT

MASTER
layout





INFINITE comfort

Infini Jagtap City is a testament to visionary development, seamlessly blending luxury and distinction. With meticulous design and flawless execution, this exceptional project establishes a benchmark for sophistication and elegance. Select from a range of residential options featuring expansive layouts that redefine the essence of comfort. Infini Jagtap is dedicated to crafting a life of distinction for you, ensuring a truly exceptional living experience.



**GRAND DESIGNER
ENTRANCE GATE**



**SECURITY
GUARD CABIN**



**CCTV
SURVEILLANCE**

A WORLD OF ENDLESS
possibilities





2BHK

Upto 713 Carpet

3BHK

Upto 876 Carpet

**17
Flooring
Building**

(Basement, Ground, 6-Tower)

**5.5 Acres
Development**

(Most premium
development of
Charholi Bk.)

**2 & 3 BHK
Premium
residences**

(1200 Apartments)

**50+
Lifestyle
Amenities.**

(Ground Floor and
Top Terrace Amenities)





ARTIST'S IMPRESSION



INFINI
JAGTAP CITY

**PREMIUM 2 & 3 BHK RESIDENCES
AT WADMUKHWADI, CHARHOLI. BK**

Welcome to Infini Jagtap City, nestled in the serene locale of Charholi, Pune, amidst the tranquil beauty of Pimpri-Chinchwad.

Here, we redefine the concept of home, infusing it with spirituality and a deep connection to nature. Surrounded by lush greenery and a peaceful ambiance, Infini Jagtap City offers more than just a place to live; it provides a sanctuary for spiritual rejuvenation and holistic well-being. Experience a harmonious blend of modern comforts and ancient wisdom, where every corner resonates with the essence of spiritual living.

Welcome home to a life of tranquillity and inner peace at Infini Jagtap City.



A foundation

O F E X C E L L E N C E



Top terrace

AMENITIES



LOBBY WITH PERGOLA



PARTY LAWN AREA



BUFFET AREA



STAGE WITH PERGOLA



ARTIFICIAL LAWN



PATHWAY



SEATING AREA



AMPHITHEATER



STAGE



STAR GAZING AREA



SEATING WITH PERGOLA



CHIT-CHAT AREA



FLOOR GAME ZONE



GOSSIP CORNER



MOTHER'S DEN



RUBBER FLOORING



CLIMBING WALL



TODDLER'S PLAY AREA



SOCIAL ZONE



READER'S DEN



SENIOR CITIZEN AREA



YOGA AREA



MEDITATION AREA

YOGA



STAR GAZING AREA







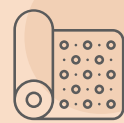
UNLIMITED adventures



TODDLER'S
PLAY AREA



CLIMBING
WALL



RUBBER
FLOORING



SENIOR
CITIZEN AREA



STAR
GAZING AREA





ARTIST'S IMPRESSION

UNENDING connections



YOGA AND
MEDITATION
AREA



FLOOR
GAME ZONE



PARTY
LAWN AREA



BUFFET
AREA



AMPHITHEATRE
WITH STAGE

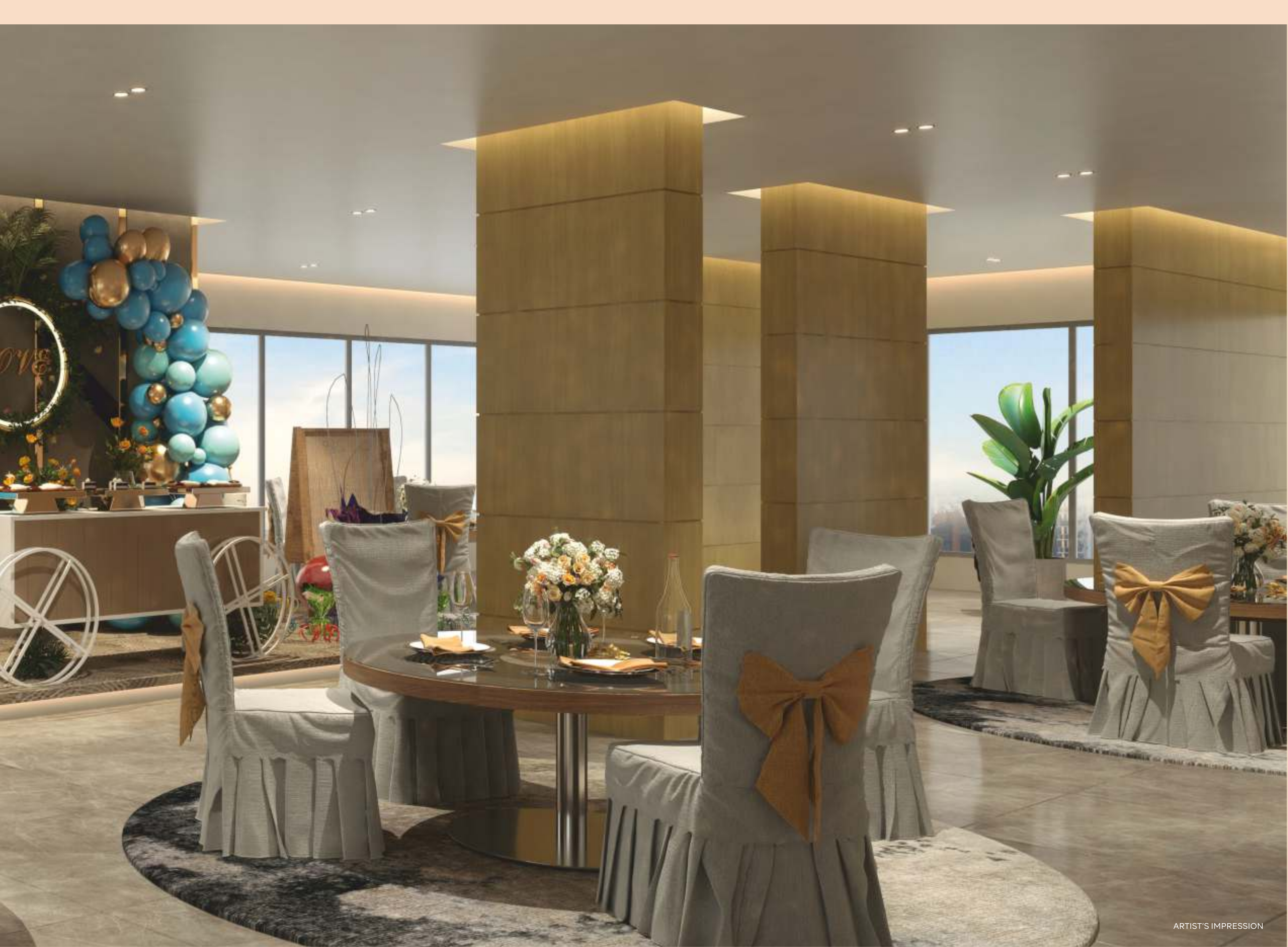


A tradition

OF INDEFINITE REFINEMENT

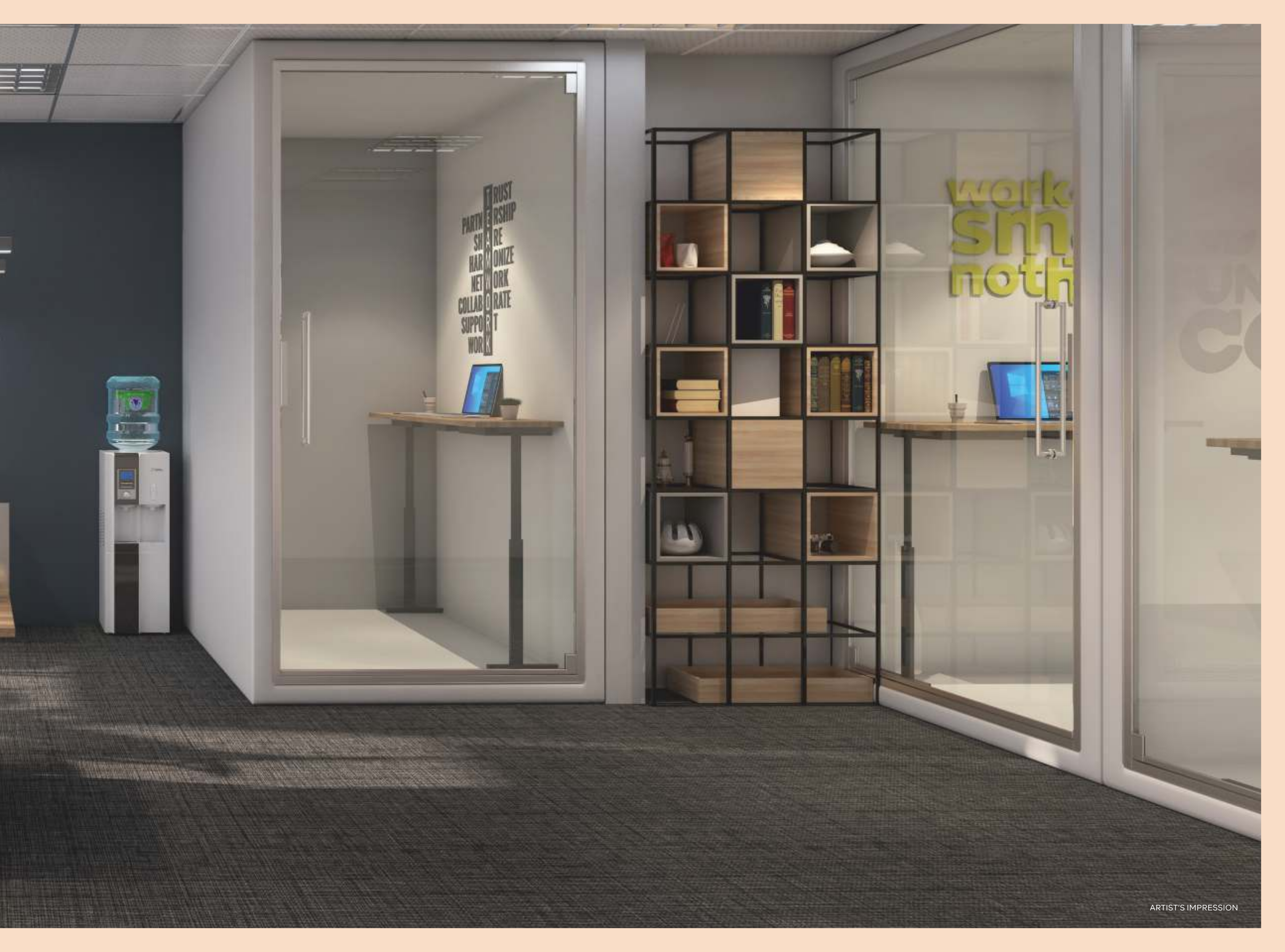
MULTIPURPOSE HALL PODIUM





CO - WORKING SPACES PODIUM





TRUST
PARTNERSHIP
SHARE
HARMONIZE
NETWORK
COLLABORATE
SUPPORT
WORK

work
smart
nothing

INDOOR GAMES PODIUM



Be the master of
your gaming destiny
with creative play.

Let your creativity
take the lead in
gaming.




DAY CARE AREA PODIUM





Love
with wine



Ground

LEVEL AMENITIES



PATHWAY



HOT FOOT COURT



SEATING



PLAY AREA



CLIMBING WALL



PERGOLA



GAZEBO



PARTY LAWN



TILE-LAWN AREA



CLUB HOUSE



CHANGING/ SHOWER ROOM / TOILET



POOLSIDE DECK



SWIMMING POOL



BASKET BALL COURT



FLAG HOSTING



PET PARK



TABLE TENNIS



MULTIPURPOSE PLAY COURT



TEMPLE



STAGE

Indoor AMENITIES

Indoor multipurpose hall

Co- working space

library

Gym & fitness Centre

Toddler area - Creche area

Guest room

Society office

Driver room

LAWN + CLUBHOUSE





ARTIST'S IMPRESSION

VAST celebrations

These sprawling lawn offers ample space for gatherings of all sizes. With lush green surroundings and beautiful landscaping, the atmosphere is perfect for creating unforgettable memories. Equipped with all the necessary amenities and facilities, the party lawn ensures that the event runs smoothly, letting you enjoy every moment with your loved ones.



PARTY LAWN



GAZEBO SEATING



CHILDREN'S PLAY AREA



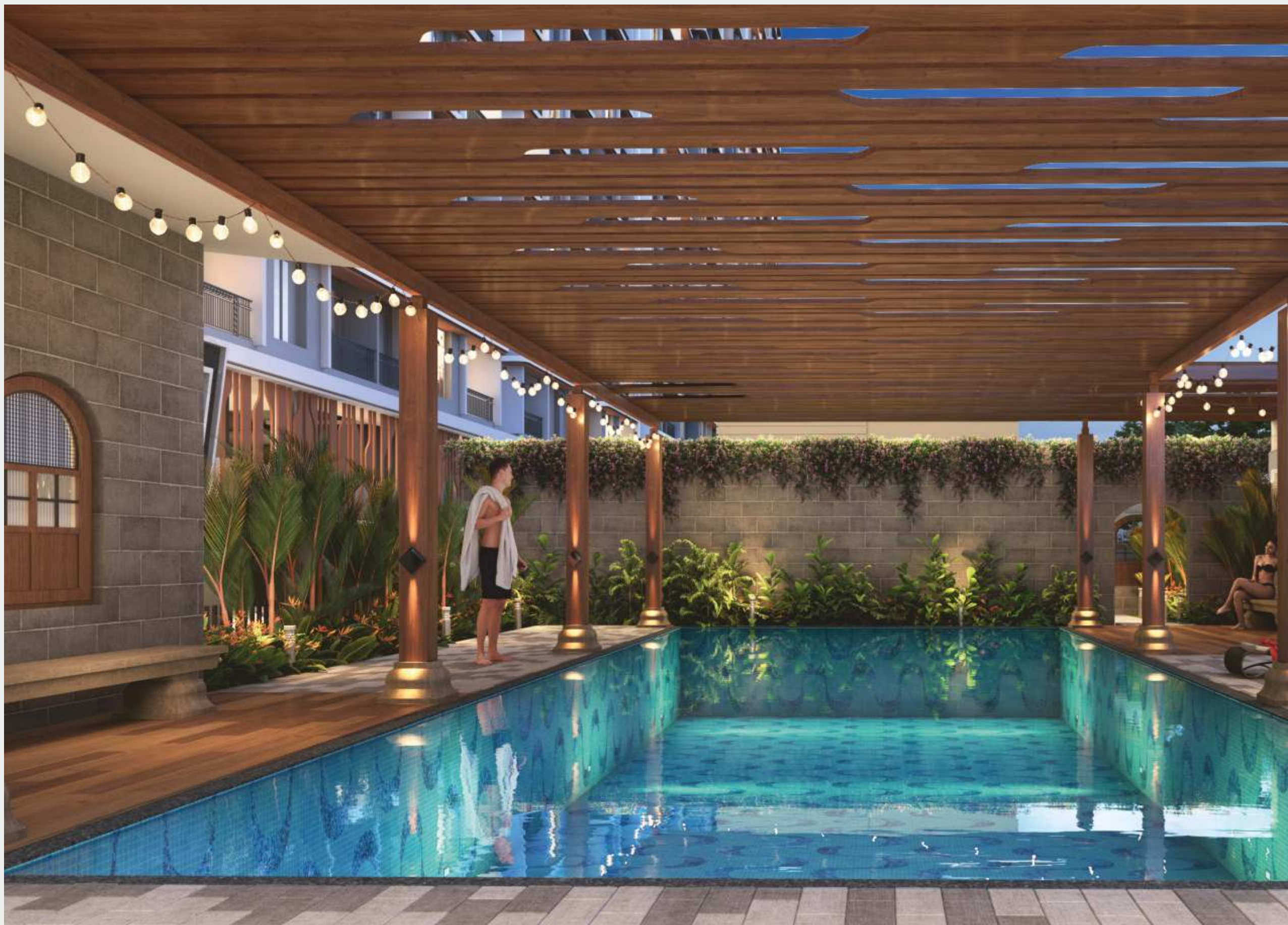
JOGGING
TRACK



FOOT BALL
COURT



PATHWAY





ARTIST'S IMPRESSION

EVERLASTING pleasures

Dive into a world of aquatic bliss with our inviting swimming pool, where relaxation meets rejuvenation. Adjacent to it, discover our thoughtfully designed changing rooms and shower facilities, ensuring your comfort and convenience after every swim. Step onto the poolside deck, a perfect spot to unwind and soak in the serene ambiance. And when you're ready for some socializing or recreational activities, our modern clubhouse offering a space to connect, unwind, and indulge in leisurely pursuits. Enjoy every aspect of a vibrant and fulfilling lifestyle at Infini Jagtap City.



**COVERED
SWIMMING POOL**



**POOLSIDE
DECK**



**CHANGING/
SHOWER ROOM, TOILET**





ARTIST'S IMPRESSION

BOUNDLESS zest

It's your versatile venue for various activities. The court is designed to accommodate a range of sports and recreational pursuits. With well-maintained facilities and ample space, it's the perfect place to stay active and enjoy your favorite sports.



TABLE TENNIS



BOX CRICKET



BADMINTON COURT



VOLLEYBALL COURT





ARTIST'S IMPRESSION

ENDLESS leisure

Welcome to Club Infini! Here, you'll find everything you need to relax, have fun, and connect with your neighbours. It is also the perfect spot to unwind with a good book in our quiet library or channel your energy with a nice workout session. Come on in and make the most of all the leisure this clubhouse has to offer.



**INDOOR
MULTIPURPOSE HALL**



**CO-WORKING
SPACE & LIBRARY**



**GYM & FITNESS
CENTER**



**TODDLERS/ CRECHE
AREA**



GUEST ROOM

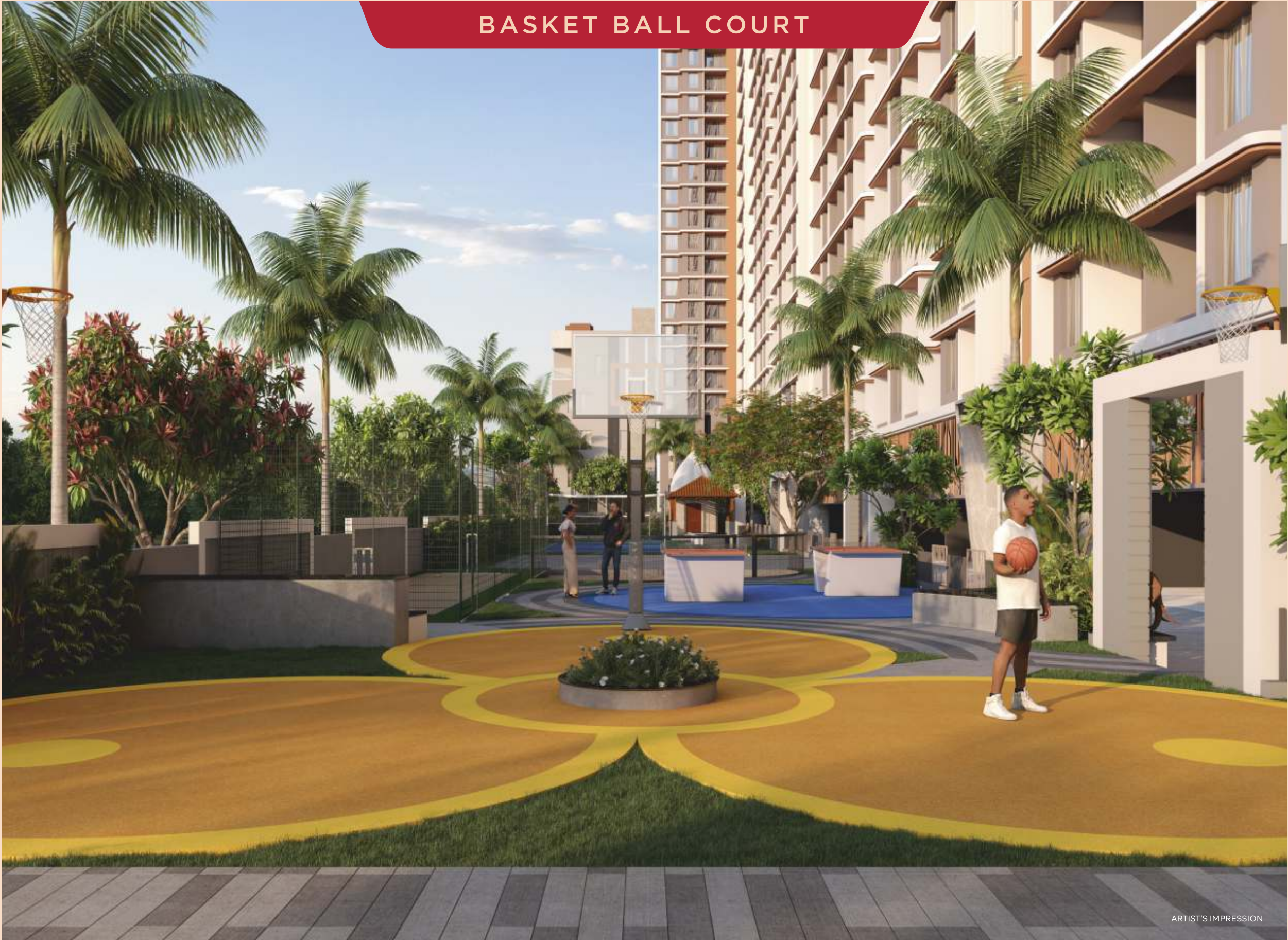


SOCIETY OFFICE

BADMINTON COURT TEMPLE



BASKET BALL COURT



GYM & FITNESS CENTRE

THE BODY
ACHIEVES
WHAT THE MIND
BELIEVES



BE DIFFERENT

THE MORE YOU
SWEAT IN
TRAINING,
THE LESS YOU
BLEED
IN COMBAT.



009
006
003
PLAY
SPORT
HARD



Specifications



STRUCTURE

- Earthquake-resistant RCC framed structure
- AAC Blockwork in internal and external walls

RAILING

- MS & Glass Railing for terrace / Balcony



FLOORING

- 600mmX1200mm Vitrified in living, master bed & other rooms
- 600mmx1200mm Anti-skid tiles common toilet of make
- 600mmx1200mm digital wall tiles in master toilet of make
- Digital wall tiles in Guest toilet of make Nitco/ Kajaria/ Varmora/Somany/ Equivalent
- Digital wall tiles in Common toilet of make



DOOR

- Internal Door - Both side Laminated post framed doors with mortise handle lock in bedroom
- Toilet Door - Waterproof post formed with mortise lock
- Terrace - Aluminium Sliding door cylindrical lock



KITCHEN AND DRY BALCONY

- Kitchen plat from- Synthetic Granite on kadappa support - (Kadappa black paint matt finish)
- Kitchen sink Stainless steel
- Kitchen flooring -Vitrified (same as rest of rooms of flat)
- Height of kitchen otta from FFL (Floor finish Level) = 30"
- Kitchen Wall tiles vitrified tile 600x1200mm as per selection upto 2'



COMMON

- CCTV Common area
- Gunset backup for common area
- STP
- OWC
- Solar water system
- Rain water harvesting



PAINT

- Gypsum finished Walls & Ceiling.
- 2 coat of Acrylic premium emulsion paint for internal wall & Ceiling
- External wall with Apex paint
- Grills on satin finish oil paint
- CCTV in Common area. Digital lock on main door. Gunset backup for common areas



BATHROOMS

- Concealed plumbing
- CP - Fittings :Jaguar or Equivalent/Johnson
- Concealed flush valves
- Sanitary wares: Cera/jaguar/ Equivalent
- Hot and cold mixing diverter in toilets
- Solar heated water supply in one bedroom toilet. Treated water supply for flush use.



ELEVATORS

- Automatic Elevators make Otis, kone or Equivalent



WINDOW

- Powder coated three-track aluminium windows with mosquito nets
- Hall window full wall glass window





2 BHK UNIT PLAN

- 1. ENTRANCE
- 2. LIVING ROOM
- 3. BALCONY

- 4. DINNING ROOM
- 5. KITCHEN
- 6. COMMON WASHROOM

- 7. MASTER BEDROOM
- 8. ATTACHED WASHROOM
- 9. ATTACHED BALCONY

- 10. BEDROOM 2



ARTIST'S IMPRESSION

3 BHK UNIT PLAN

1. ENTRANCE
2. LIVING ROOM
3. BALCONY

4. DINNING ROOM
5. KITCHEN
6. COMMON WASHROOM

7. MASTER BEDROOM
8. ATTACHED WASHROOM
9. ATTACHED BALCONY

10. BEDROOM 2
11. ATTACHED WASHROOM
12. BEDROOM 3

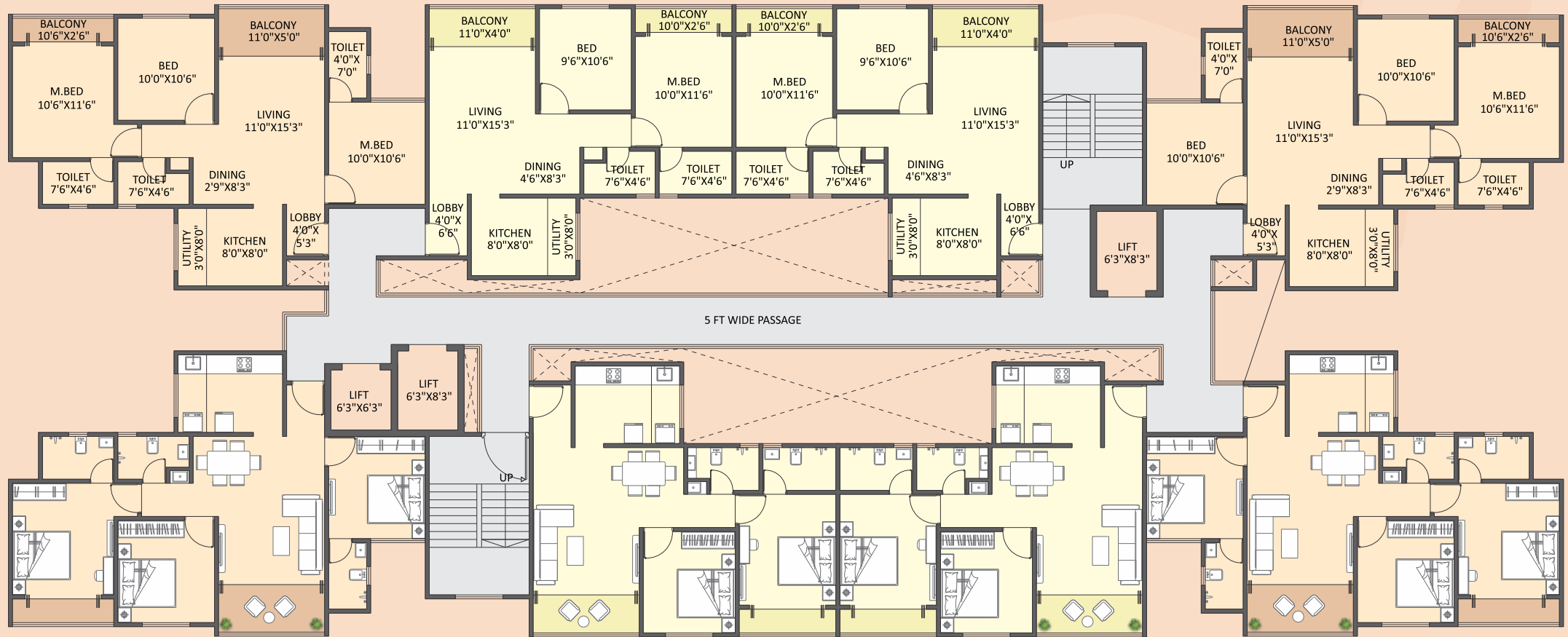
WING - F | TYPICAL FLOOR PLAN

Flat No. 106, 206, 306, 406, 506, 606, 706, 906,
1006, 1106, 1206, 1406, 1506, 1606, 1706
3 BHK Total Carpet Area : 876 Sq.ft.

Flat No. 107, 207, 307, 407, 507, 607, 707, 907,
1007, 1107, 1207, 1407, 1507, 1607, 1707
2 BHK Total Carpet Area : 722 Sq.ft.

Flat No. 108, 208, 308, 408, 508, 608, 708, 908,
1008, 1108, 1208, 1408, 1508, 1608, 1708
2 BHK Total Carpet Area : 722 Sq.ft.

Flat No. 101, 201, 301, 401, 501, 601, 701, 901,
1001, 1101, 1201, 1401, 1501, 1601, 1701
3 BHK Total Carpet Area : 876 Sq.ft.



Flat No. 105, 205, 305, 405, 505, 605, 705, 905,
1005, 1105, 1205, 1405, 1505, 1605, 1705
3 BHK Total Carpet Area : 876 Sq.ft.

Flat No. 104, 204, 304, 404, 504, 604, 704, 904,
1004, 1104, 1204, 1404, 1504, 1604, 1704
2 BHK Total Carpet Area : 722 Sq.ft.

Flat No. 103, 203, 303, 403, 503, 603, 703, 903,
1003, 1103, 1203, 1403, 1503, 1603, 1703
2 BHK Total Carpet Area : 722 Sq.ft.

Flat No. 102, 202, 302, 402, 502, 602, 702, 902,
1002, 1102, 1202, 1402, 1502, 1602, 1702
3 BHK Total Carpet Area : 876 Sq.ft.



WING - F | REFUGE FLOOR PLAN





CREDENTIALS

Design Architect
YW architects

RCC Designer
Satish Marathe Engineering Consultant

Landscaping
Mahesh Chinchalkar, Redbracket

MEP Consultant
Skyline MEP consultant

3D Designer
Square one Studio

Designing
Shubh Advertising & Tech.



GET IN TOUCH

Site Address: Infini Jagtap City, Sankalpa Garden,
Charholi Budruk, Pimpri-Chinchwad - 412105

Mail: sales@infinigroup.co.in
Call: **7575 92 5050, 7575 93 5050**

Website: www.infinigroup.co.in
FB: www.facebook.com/infinigrouppune



MahaRERA Registration No.: P52100056348,
<http://maharera.mahaonline.gov.in>

Disclaimer: This is not an offer, an invitation to offer and/or commitment of any nature. This contains artistic impressions and stock images for illustrative purpose and no warranty is expressly or impliedly given that completed development will comply in any degree with such artist's impression as depicted. All specifications of the flat shall be as per the final agreement between the Parties. Recipients are advised to use their discretion in relying on the information/amenities described/shown therein.



SHUBHADVERTISING



INFINI
JAGTAP CITY
2 & 3 BHK PRIME RESIDENCES